



# GAT MONTHLY MEMBERSHIP PROGRESS REPORT

Results as of: 6/30/2022

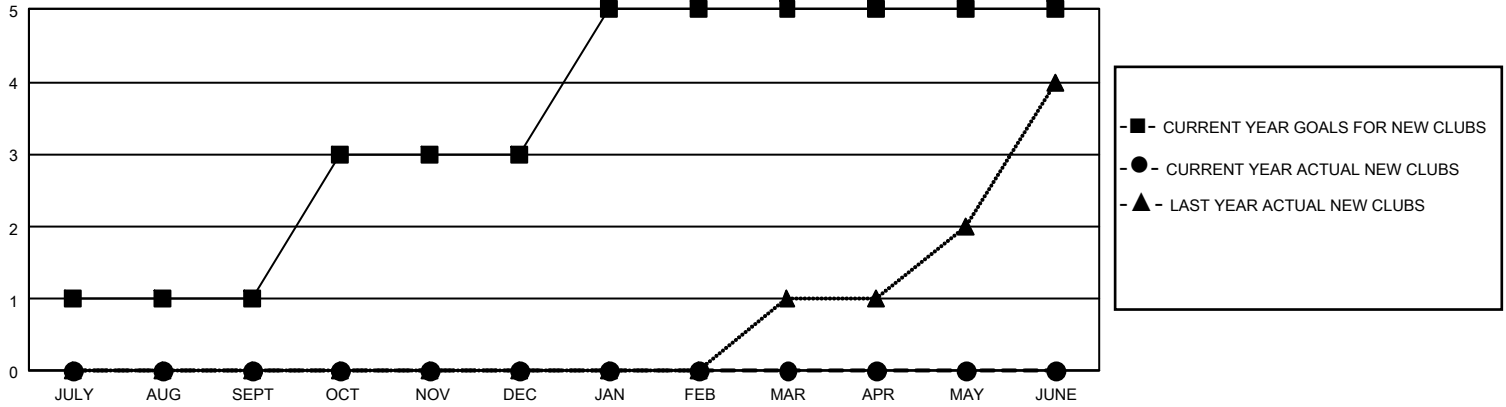
## GMT Constitutional Area 2, Group C

REPORT DOES NOT INCLUDE CLUBS IN UNDISTRICTED AREAS.

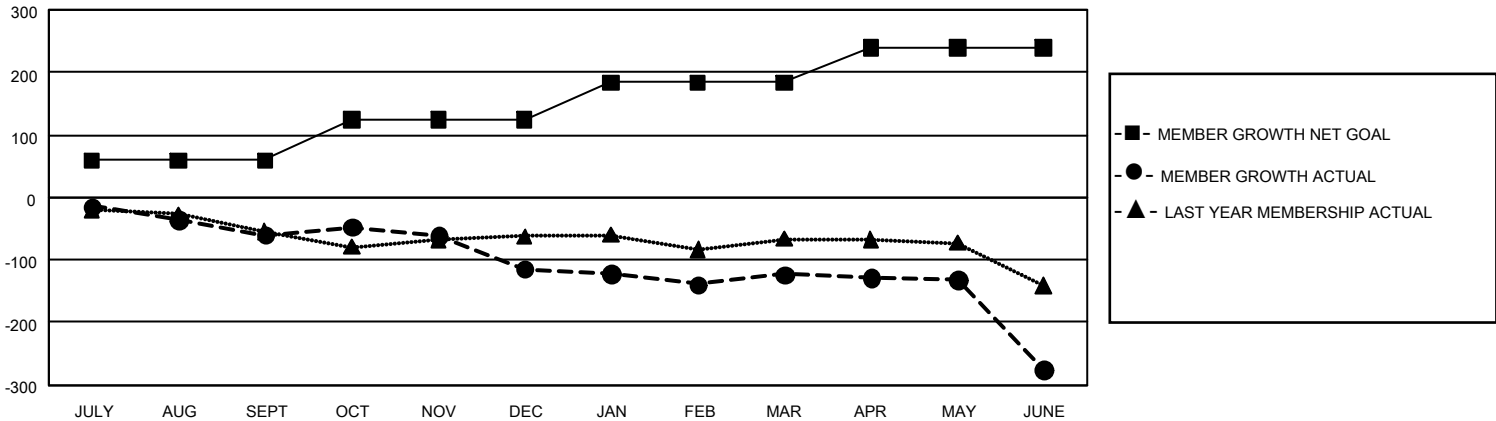
Clubs			
RESULTS FOR 2021-2022			
QUARTER	NEW CLUB GOAL	NEW CLUBS	DROPPED CLUBS
JULY/AUG/SEPT	3	0	1
OCT/NOV/DEC	6	0	4
JAN/FEB/MAR	6	0	0
APR/MAY/JUNE	0	0	1

Members			
RESULTS FOR 2021-2022			
QUARTER	MEMBER GROWTH NET GOAL	MEMBER GROWTH ACTUAL	DROPPED MEMBERS ACTUAL (including transfers)
JULY/AUG/SEPT	59	27	81
OCT/NOV/DEC	65	58	109
JAN/FEB/MAR	60	64	67
APR/MAY/JUNE	55	105	242

GOALS AND ACTUAL NEW CLUBS CUMULATIVE



GOALS AND ACTUAL MEMBERS CUMULATIVE



<b>DROPPED CLUBS: 6</b>	85 CLUBS OF 165 ADDED 1 OR MORE NEW MEMBERS	<b>GENDER DISTRIBUTION</b>	
		MALE 2,264 (66.28%) FEMALE 1,152 (33.72%) NON BINARY 0 (0.00%) PREFER NOT TO ANSWER 0 (0.00%)	
<b>DROPPED MEMBERS</b>		<a href="#">CLICK HERE FOR CUMULATIVE MEMBERSHIP DATA</a>	TOTAL FAMILY UNIT MEMBERS 625
DECEASED 36 CLUB CANCELLED 59 OTHER 404 <b>TOTAL 499</b>			FAMILY MEMBERS PAYING HALF DUES 319